

Look in My Heart

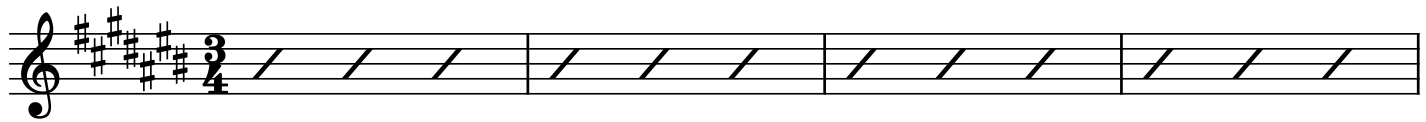
♩ = 90

D#m7

C#M9

F#(add2)

C#



5

C#

A#m7

F#M7

C#

C#M(add2)



Look in my heart and you'll find there is long - ing;
How can we know what to - mor - row will bring us?
So, in the light of the love all a - round us,

9

C#

A#m7

F#M9

G#sus G#



deep in my heart where the love knows no end.
What we be - gin is a path with - out end.
here in the strength of this cir - cle of friends,

13

C#

A#m7

F#M7

E#m(add2)



Called now to serve, will I know how to ans - wer?
Path leads to path, and they join, in - ter - wo - ven.
pledge we to search for these ans - wers to - geth - er:

17

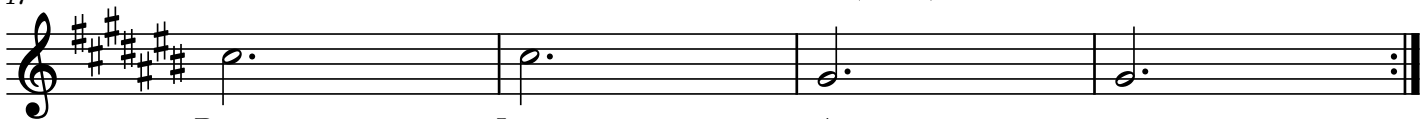
D#m7

C#M9

F#(add2)

G#7

C#



Peace, Love, A - - men.

Last time only

21

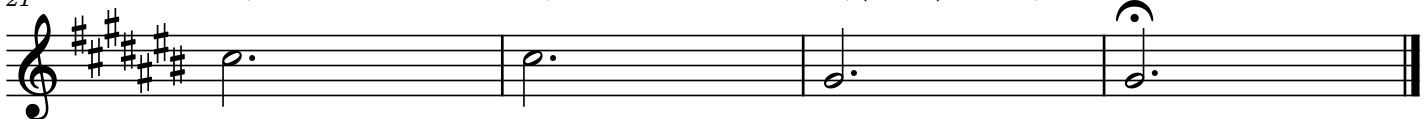
D#m7

C#M9

F#(add2)


G#7

C#



Peace, Love, A - - men.

Arrangement Permissions

 One-time Adaptation

 New Arrangement OK

 ~~Seek permission to arrange~~

Look at the *Sing Out Love* "Permissions" section for further explanation 